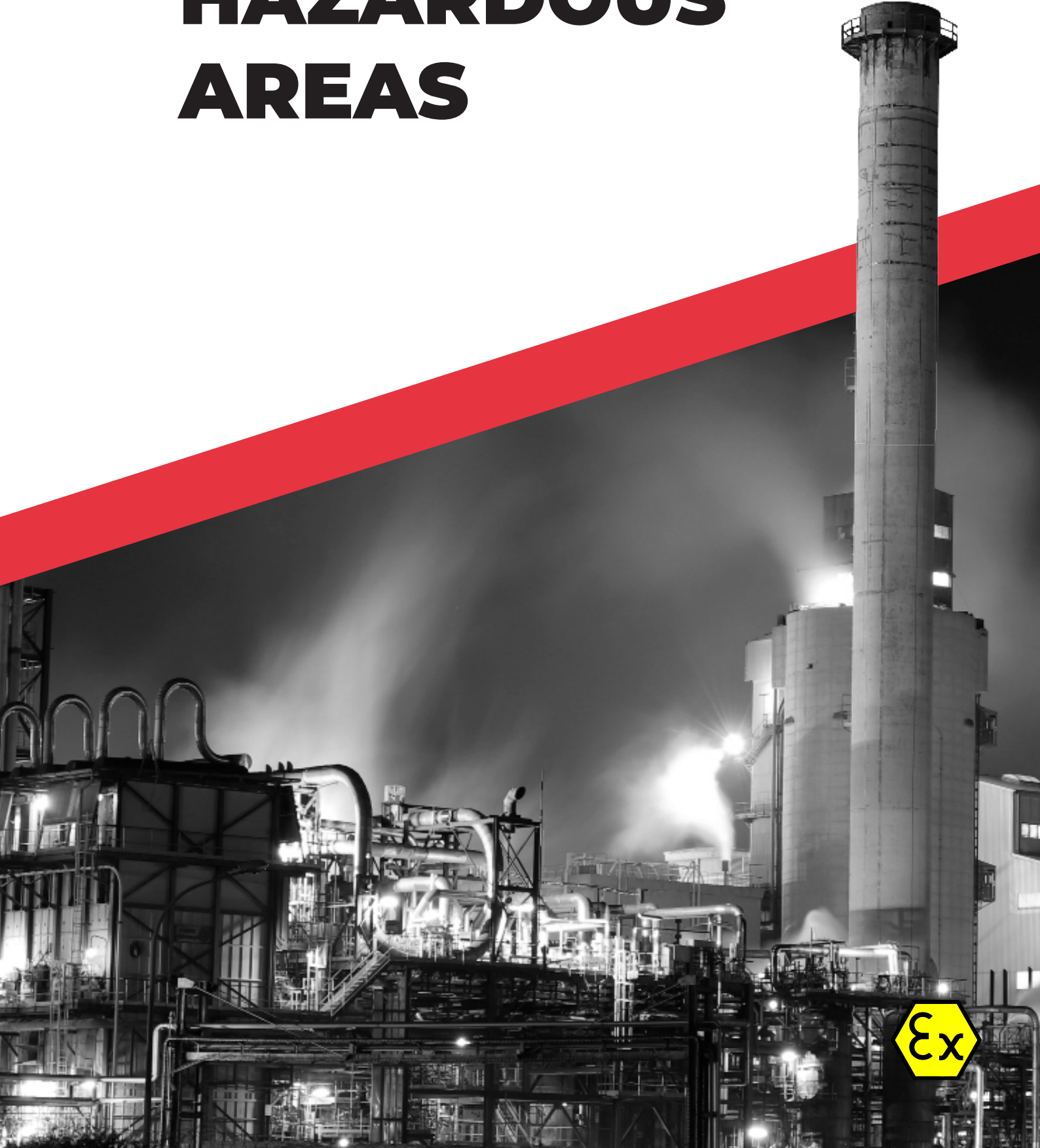
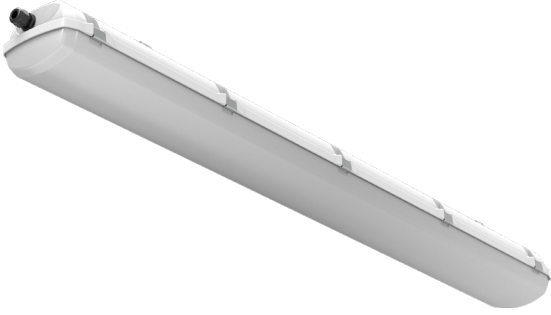


LIGHTING FOR HAZARDOUS AREAS



EXTRA-EX-LED

Ex ZONE 1, 21



Explosion proof linear luminaire

Ex II 2G Ex eb mb op is IIC T4 Gb
Ex II 2D Ex tb op is IIIC T67°C Db
certificate FTZÚ 16 ATEX 0167X

- IP66
- IK10
- Up to 6 561 lm
- Up to 155 lm/W
- -20°C to +50°C



Characteristics:

- Polycarbonate UV stable housing RAL 7035
- Opal polycarbonate diffuser
- Available in 3000/4000/6000K
- Emergency kit on request
- Surface or suspended mounting

Typical application:



EXTEND-EX-P-LED

Ex ZONE 1, 21



Explosion proof linear luminaire

Ex II 2G Ex db eb mb op is IIC T4 Gb
Ex II 2D Ex tb op is IIIC 71°C Db
certificate FTZÚ 16 ATEX 0080X

- IP66
- IK08
- Up to 6 138 lm
- Up to 139 lm/w
- -20°C to +55°C



Characteristics:

- GRP housing RAL 7035
- Clear polycarbonate diffuser
- Central locking system
- Available in 3000/4000/6000K
- Emergency kit on request
- Surface or suspended mounting

Typical application:

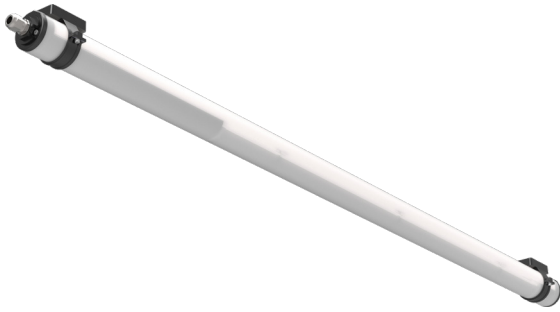


HELYUM
— Ex-Proof Elektrik Malzemeleri —
IVEDİK OSB, YENİ BAŞKENT SAN SİT.1563 CADDE
NO:13/1-2-3 KATLAR İVEDİK
YENİMAHALLE/ANKARA



AQUA-70-EX-LED

Ex ZONE 1, 21



Explosion proof tubular luminaire

Ex II 2G Ex db eb mb op is IIC T4 Gb
Ex II 2D Ex tb op is IIIC T62°C Db
certificate FTZÚ 17 ATEX 0052X

- IP66/68
- IK10
- Up to 5 985 lm
- Up to 139 lm/W
- \updownarrow -20°C to +50°C



Characteristics:

- High impact resistant polycarbonate clear tube
- End caps from polycarbonate fiberglass
- Available in 3000/4000/6000K
- Surface or suspended mounting

Typical application:



Factory



Oil & gas



Petrochemical



Off-shore



Oil refinery



Sewage treatment plants

RAMBO-EX-LED

Ex ZONE 1, 21



Explosion proof tubular luminaire

Ex II 2G Ex db eb mb op is IIC T4 Gb
Ex II 2D Ex tb op is IIIC T59°C Db
certificate FTZÚ 17 ATEX 0053X

- IP66/67
- IK10
- Up to 5 441 lm
- Up to 126 lm/W
- \updownarrow -20°C to +50°C



Characteristics:

- High impact resistant polycarbonate clear tube in steel housing RAL 9003 (stainless steel on request)
- End caps from polycarbonate fiberglass
- Available in 3000/4000/6000K
- Surface or suspended mounting

Typical application:



Factory



Oil & gas



Petrochemical



Off-shore



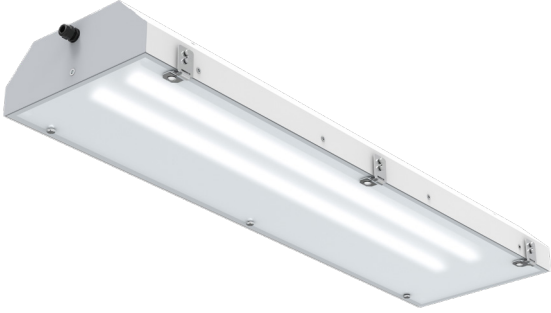
Oil refinery

HELYUM
— Ex-Proof Elektrik Malzemeleri —
IVEDİK OSB, YENİ BAŞKENT SAN SİT.1563 CADDE
NO:13/1-2-3 KATLAR İVEDİK
YENİMAHALLE/ANKARA



PITBUL-EX-LED

Ex ZONE 1, 21



Explosion proof Steep Roof luminaire

Ex II 2G Ex db eb mb op is IIC T4 Gb
Ex II 2D Ex tb op is IIIC T 67°C Db
certificate FTZÚ 16 ATEX 0089X

- IP65
- IK10+
- Up to 13 447 lm
- Up to 159 lm/W
- \uparrow -40°C to +60°C



Characteristics:

- Painted steel housing RAL 9003 (stainless steel on request)
- Opal tempered safety glass
- Available in 3000/4000/6000K
- Emergency kit on request
- Surface, recessed or suspended mounting

Typical application:



Factory



Oil & gas



Petrochemical



Oil refinery



Pharma & Laboratories

EXTRA-N-LED

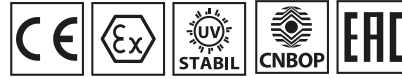
Ex ZONE 2, 22



Explosion proof linear luminaire

Ex II 3G Ex nR IIC T6 Gc
Ex II 3D Ex tc IIIC T80°C Dc
certificate FTZÚ 16 ATEX 0102X

- IP66
- IK10
- Up to 16 311 lm
- Up to 155 lm/W
- \uparrow -20°C to +60°C



Characteristics:

- Polycarbonate UV stable housing RAL 7035
- Opal polycarbonate diffuser
- Available in 2700K to 6500K
- Emergency kit/Dimming on request
- Surface or suspended mounting

Typical application:



Factory



Oil & gas



Petrochemical



Pharma & Laboratories



Food & beverages production areas

HELYUM
— Ex-Proof Elektrik Malzemeleri —
IVEDİK OSB, YENİ BAŞKENT SAN SİT.1563 CADDE
NO:13/1-2-3 KATLAR İVEDİK
YENİMAHALLE/ANKARA





Explosion proof linear luminaire

Ex II 3G Ex nR IIC T6 Gc

Ex II 3D Ex tc IIIC T80°C Dc

certificate FTZÚ 17 ATEX 0027X

- IP66
- IK07
- Up to 16 963 lm
- Up to 154 lm/W
- \updownarrow -20°C to +60°C



HELYUM
— Ex-Proof Elektrik Malzemeleri —
IVEDİK OSB, YENİ BAŞKENT SAN SİT.1563 CADDE
NO:13/1-2-3 KATLAR İVEDİK
YENİMAHALLE/ANKARA

Characteristics:

- Painted steel housing RAL 9003 (stainless steel on request)
- Opal tempered safety glass
- Available in 2700K to 6500K
- Emergency kit/Dimming on request
- Surface or suspended mounting

Typical application:



Factory



Oil & gas



Petrochemical



Off-shore



Pharma
& Laboratories



Power plants



BASET-N-LED

Ex ZONE 2, 22



Explosion proof bulkhead luminaire

Ex II 3G Ex nR IIC T6 Gc
Ex II 3D Ex tc IIIC T65°C Dc
certificate FTZÜ 18 ATEX 0048X

- IP66
- IK07
- Up to 2 537 lm
- Up to 131 lm/W
- -20°C to +50°C



Characteristics:

- Polycarbonate UV stable housing RAL 7035
- Opal polycarbonate diffuser
- Available in 2700K to 6500K
- Emergency version with set of pictograms
- Dimming on request
- Surface or suspended mounting



Factory



Oil & gas



Petrochemical



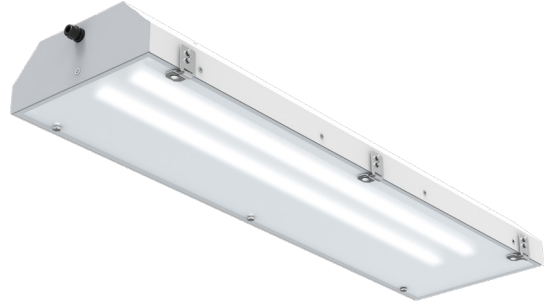
Oil refinery



Power plants

PITBUL-N-LED

Ex ZONE 2, 22



Explosion proof Steep Roof luminaire

Ex II 3G Ex nR IIC T6 Gc
Ex II 3D Ex tc IIIC T68°C Dc
certificate FTZÜ 17 ATEX 0129X

- IP65
- IK10+
- Up to 24 845 lm
- Up to 131 lm/W
- -20°C to +65°C



Characteristics:

- Painted steel housing RAL 9003 (stainless steel on request)
- Opal tempered safety glass
- Available in 2700K to 6500K
- Emergency kit/Dimming on request
- Surface, recessed or suspended mounting



Factory



Oil & gas



Petrochemical



Paint shops



Pharma & Laboratories

HELYUM
— Ex-Proof Elektrik Malzemeleri —
IVEDİK OSB, YENİ BAŞKENT SAN SİT.1563 CADDE
NO:13/1-2-3 KATLAR İVEDİK
YENİMAHALLE/ANKARA



FILA-N-LED

Ex ZONE 2, 21/22



Explosion proof paint booth luminaire

Ex II 3G Ex nR IIC T6 Gc
Ex II 3D Ex tc IIIC T70°C Dc
certificate FTZÚ 20 ATEX 0077X

- IP66
- IK07
- Up to 25 692 lm
- Up to 142 lm/W
- -20°C to +65°C



Characteristics:

- Painted steel housing RAL 9003 (stainless steel on request)
- Opal tempered safety glass
- Available in 2700K to 6500K
- Emergency kit/Dimming on request
- Variable mounting options (surface, vertical, horizontal, corner, recessed)

Typical application:



Factory



Oil & gas



Petrochemical



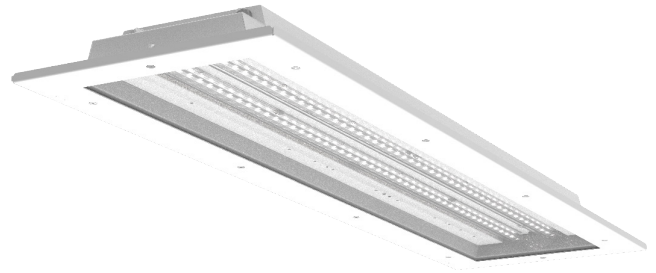
Paint shops



Pharma & Laboratories

NORD-N-LED-CG

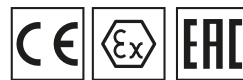
Ex ZONE 2, 22



Explosion proof paint booth luminaire

Ex II 3G Ex nR IIC T6 Gc
Ex II 3D Ex tc IIIC T80°C Dc
certificate FTZÚ 17 ATEX 0026X

- IP66
- IK10
- Up to 12 807 lm
- Up to 166 lm/W
- -20°C to +60°C



Characteristics:

- Painted steel housing RAL 9003 (stainless steel on request)
- Clear tempered safety glass
- Optics : ACL LINEAR LENS 24mm BATWING
- Available in 2700K to 6500K
- Emergency kit/Dimming on request
- Recessed mounting

Typical application:



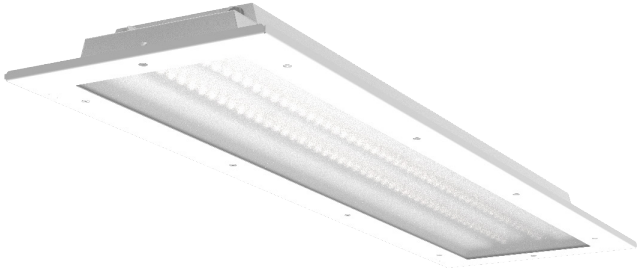
Factory



Paint shops

HELYUM
— Ex-Proof Elektrik Malzemeleri —
IVEDİK OSB, YENİ BAŞKENT SAN SİT.1563 CADDE
NO:13/1-2-3 KATLAR İVEDİK
YENİMAHALLE/ANKARA





Explosion proof paint booth luminaire

Ex II 3G Ex nR IIC T6 Gc

Ex II 3D Ex tc IIIC T80°C Dc

certificate FTZÚ 17 ATEX 0026X

- IP66
- IK10
- Up to 26 322 lm
- Up to 160 lm/W
- -20°C to +60°C



HELYUM
— Ex-Proof Elektrik Malzemeleri —
IVEDİK OSB, YENİ BAŞKENT SAN SİT.1563 CADDE
NO:13/1-2-3 KATLAR İVEDİK
YENİMAHALLE/ANKARA

Characteristics:

- Painted steel housing RAL 9003
(stainless steel on request)
- Opal tempered safety glass
- Available in 2700K to 6500K
- Emergency kit/Dimming on request
- Recessed mounting

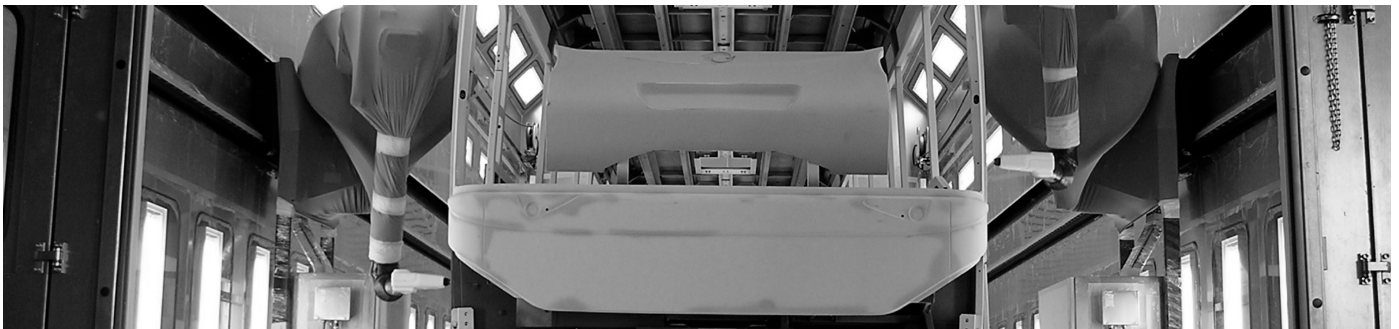
Typical application:



Factory



Paint shops



COMING SOON

BERGER-N-LED

Ex **ZONE 2, 22**

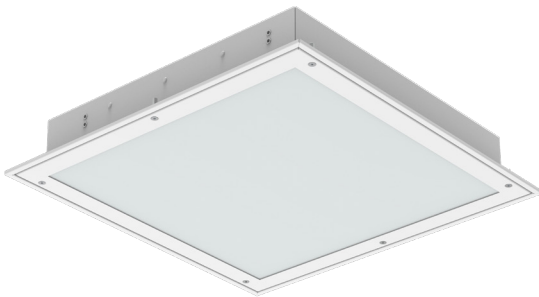
Explosion proof High-Bay



BORDER-N-LED

Ex **ZONE 2, 21/22**

Explosion proof lighting panel




HELYUM
— Ex-Proof Elektrik Malzemeleri —
IVEDİK OSB, YENİ BAŞKENT SAN.SİT.1563 CADDE
NO:13/1-2-3 KATLAR İVEDİK
YENİMAHALLE/ANKARA



BASIC TECHNICAL INFORMATION ABOUT AREAS WITH DANGER OF EXPLOSION

ATEX directive

Electrical instruments and devices for areas with danger of explosions that are subject to requirements of the ATEX directive This Directive lays down technical requirements for the conformity assessment of equipment and protective systems designed for use in areas with danger of explosions when placed on the market.

The installations are divided into corresponding groups and categories according to this directive.

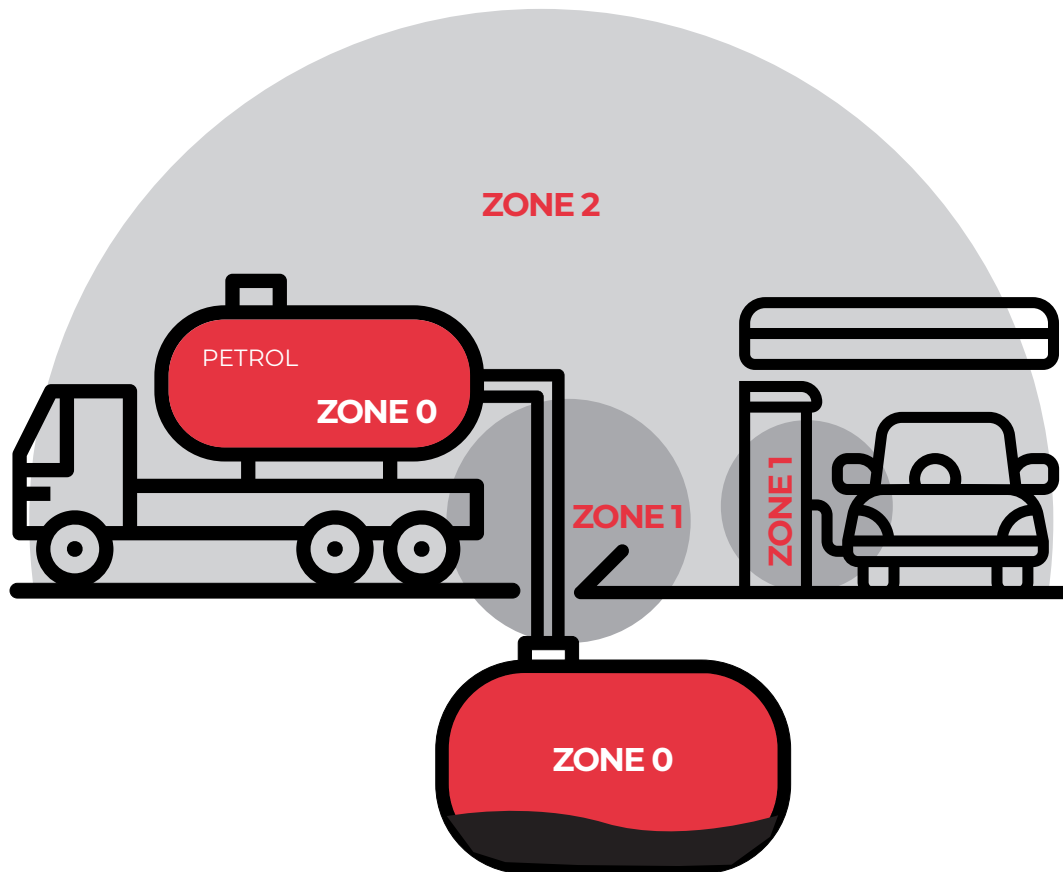
Group of devices I

- installations for underground mines with occurrence of mine gas (methane) and / or combustible dust

Group of devices II

- installations for premises with danger of explosion other than underground mines with occurrence of mine gas (methane) and / or combustible dust





a) Equipment category 1 GD includes installations that are designed to be capable of operating in conformity with the operating parameters established by the manufacturer and ensuring a very high level of protection. Installations of this category are designed for application in areas where explosive atmosphere created by gases, vapours or mists or a dust-air mixture exists permanently, for long periods or often. Installations of this category must provide the required level of protection even in case of exceptional events involving the equipment.

ZONE 0, 20 (Ga, Da)

b) Equipment category 2 GD includes installations that are designed to be capable of operating in conformity with the operating parameters established by the manufacturer and ensuring a very high level of protection. Installations of this category are designed for application in areas where the occasional formation of an explosive atmosphere by gases, vapours, mists or dust-air mixtures is likely.

The means of protection related to installations of this category ensure the required level of protection even in the event of frequent disturbances or failures of equipment that must be normally taken into account.

ZONE 1, 21 (Gb, Db)

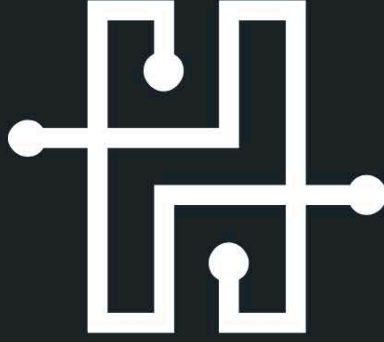
c) Equipment category 3 GD includes installations that are designed to be capable of operating in conformity with the operating parameters established by the manufacturer and ensuring a very high level of protection. Installations of this category are designed for application in areas where an explosive atmosphere created by gases, vapours, mists or dusts is unlikely to occur and, if an explosive atmosphere is created, it is likely to occur rarely and for a short time only. Installations of this category ensure the required level of safety during normal operation.

ZONE 2, 22 (Gc, Dc)



VYRTYCH a.s.
Židněves 116
294 06 Březno
CZECH REPUBLIC

WWW.VYRTYCH.COM



HELYUM

— Ex-Proof Elektrik Malzemeleri —

İVEDİK OSB. YENİ BAŞKENT SAN.SİT.
1563 CADDE NO:13/1-2-3 KATLAR
İVEDİK YENİMAHALLE/ANKARA