



- High frequency motion sensor
- Intelligent sensor technology
- Adjustable switching time
- Operating point adjustable for dawn/dusk

E4

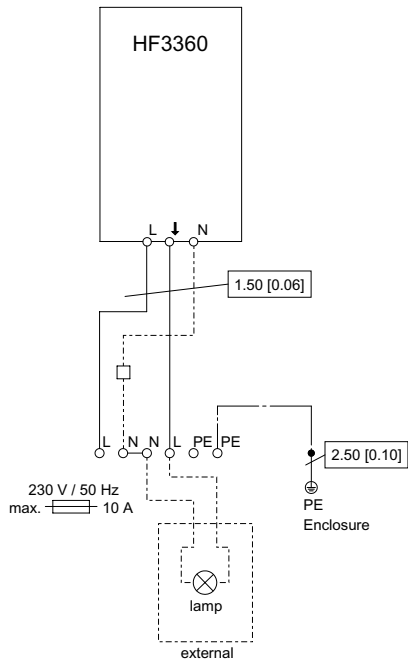
WebCode 8265E

The motion sensor is equipped with intelligent sensor technology that provides additional security. With a range of 1–8 m, a switching load of 1000 W and an operating point of 2–2000 Lux, the motion detector is perfectly suited for controlling lights and lighting systems.


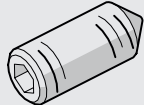
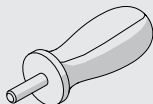

	IECEX / ATEX					
Zone	0	1	2	20	21	22
Installation in		•	•		•	•

Selection Table						
Design	Motion sensor					
Width	Height	Length	Product Type	Art. No.	Weight kg	
195 mm	172 mm	195 mm	8265/53	258122 ■	8.183	


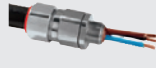
Technical Data	
Explosion Protection	
IECEX gas explosion protection	Ex db eb IIC T6 Gb
IECEX dust explosion protection	Ex tb IIIC T80 °C Db
ATEX gas explosion protection	⊕ II 2 G Ex db eb IIC T6 Gb
ATEX dust explosion protection	⊕ II 2 D Ex tb IIIC T80 °C Db
Certificates	ATEX (PTB), Brazil (ULB), China (NEPSI), IECEX (PTB), India (PESO)
Notes	Product label may vary. Series devices have certification according to ATEX and IECEX.
Ambient Conditions	
Ambient temperature	-20 °C ... +40 °C
Mechanical Data	
Degree of protection (IP)	IP66
Degree of protection note	With silicone seal
Enclosure material	Aluminium, copper-free, Seawater-resistant
Material note	For long-term use in marine environments, we recommend painting the unit
Components	
Stopping plugs	2 x CMP-757D MsNi M20
Stopping plug note	With white seal PA M20



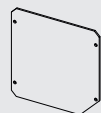

Accessories

Figure	Description	Art. No.	Weight kg
Cover with inspection window			
	for enclosure size 3 visible part of window Ø 142 mm [5,59 inch]	143452 ■	2.232
Threaded pin			
	M5x16-A2 with allen screw and point	110216	0.001
Box spanner			
	to open the enclosure cover for size 1, 2, 3, 4 2 box spanner are required	142059	0.060
Lubricating grease for thread gap			
	Grease for low temperatures	275854	1.000

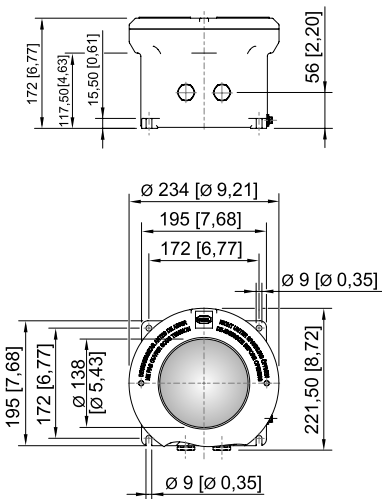
Accessories

Figure	Description	Art. No.	Weight kg
Metal cable gland			
	Ex d & Ex e Cable entry with RapidEx sealing system for all types of unarmoured and braid armour cables (nickel-plated brass) Type 20PXSS2K-REX, M20 x 1.5	246605 ■	0.200
	Ex d & Ex e Cable entry with RapidEx sealing system for all types of unarmoured and braid armour cables (nickel-plated brass) Type 20PX2K-REX, M20 x 1.5	246649 ■	0.240

Spare Parts

Figure	Description	Art. No.	Weight kg
Mounting plate			
	for enclosure size 3 M5 x 8 screws are not included.	143485	0.364
O-ring			
	silicone, for enclosure size 3	305500	0.010

Dimensional Drawings (All Dimensions in mm [inches]) – Subject to Alterations



Enclosure size 3 with inspection window